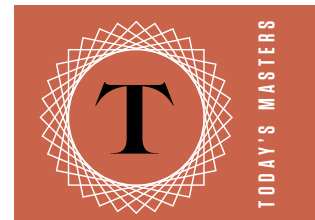




# MORE *Than Just* FACES



(THIS PAGE) **DAVID KASSAN** (b. 1977), *Dorothy*, 2015, oil on panel, 22 x 19 in., EVOKE Contemporary, Santa Fe ■  
(OPPOSITE) **KAREN OFFUTT** (b. 1967), *Offspring*, 2017, oil on board, 30 x 20 in., available from the artist



# Everyone

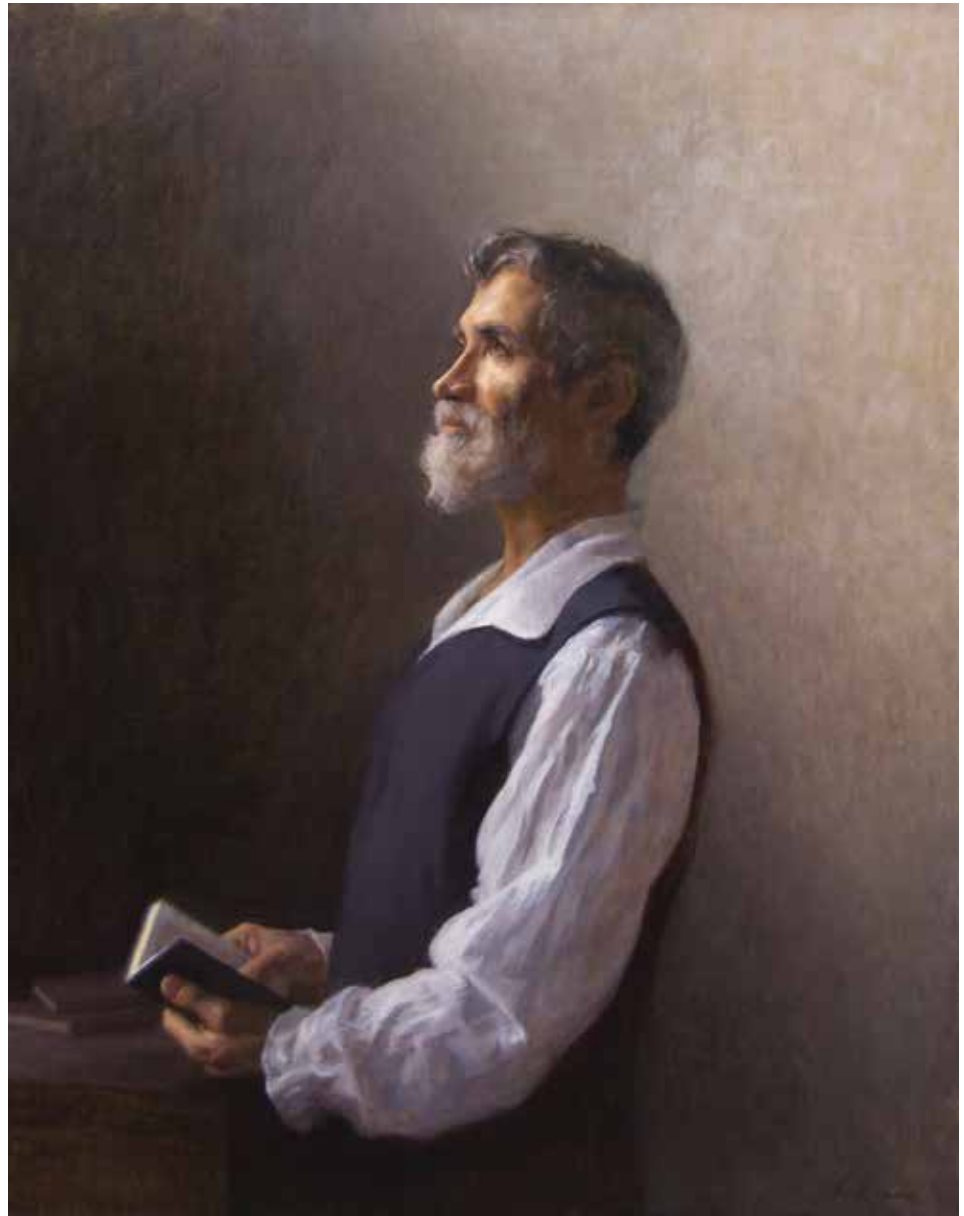
has one, so everyone is interested, to a lesser or greater degree. I'm referring to the face. Artists have been depicting faces for millennia, sometimes flatteringly and sometimes frankly, but always with the understanding that every viewer has a direct connection with the subject — and also a way of assessing the rendition's accuracy.

Just as important is the way we “read” facial expressions: there are happy and sad, for example, but also every possible emotion and mood between. Capturing each is no easy task, so we instinctively admire those artists who get it right.

Enjoy this diverse array of approaches, and please tell us about other artists who excel in this area. ●

---

**Max Gillies** is a contributing writer to *Fine Art Connoisseur*.



(OPPOSITE PAGE, TOP) **MARK B. GOODSON** (b. 1957), *Expressions of Quilly*, 2012, oil on canvas, 18 x 72 in., available from the artist ■ (OPPOSITE PAGE, CENTER) **JOHNE RICHARDSON** (b. 1960), *Morning Light*, 2013, acrylic on canvas, 30 x 40 in., private collection ■ (OPPOSITE PAGE, BOTTOM) **FELICE HOUSE** (b. 1977), *Sarah Fire*, 2015, oil on canvas, 24 x 48 in., collection of the artist ■ (THIS PAGE, TOP) **WILLIAM H. NEUKOMM** (b. 1972), *Chi Cerca Trova*, 2015, oil on linen, 40 x 32 in., available from the artist ■ (THIS PAGE, BOTTOM) **BRENDA HASH** (b. 1961), *Liz*, 2016, pastel on paper, 16 x 25 in., available from the artist



(TOP LEFT) **DAMIAN LECHOSZEST** (b. 1976), *The Farmer*, 2017, oil on canvas, 20 x 16 in., InSight Gallery, Fredericksburg, Texas ■ (TOP RIGHT) **ALAIN J PICARD** (b. 1974), *Beautiful*, 2012, pastel on paper, 36 x 24 in., Cecil Byrne Gallery, Charleston ■ (CENTER RIGHT) **DAN CHRISTIAN** (b. 1975), *Aurora*, 2016, charcoal and pastel on paper, 9 1/2 x 7 1/2 in., Lovetts Gallery, Tulsa ■ (BOTTOM LEFT) **BART LINDSTROM** (b. 1947), *Favrot*, 2005, oil on canvas, 36 x 36 in., private collection ■ (BOTTOM RIGHT) **DAVE SANTILLANES** (b. 1972), *Motherhood*, 2015, oil on board, 16 x 20 in., private collection





(TOP LEFT) KRSTII MELAINE (b. 1963), *Rascals, Rebels & Rogues*, 2016, oil on linen, 32 x 46 in., collection of the artist ■ (TOP RIGHT) LINDA HARRIS REYNOLDS (b. 1957), *Nina in Summer*, 2017, oil on linen, 27 x 34 in., collection of Mr. and Mrs. Robert J. Larnick, Jr. ■ (CENTER RIGHT) DAVID W. TERRY (b. 1958), *Poet: Naomi Shihab Nye*, 2017, oil on linen, 18 x 24 in., collection of the artist ■ (BOTTOM LEFT) NANCY BOREN (b. 1955), *Four Corners Cowboy*, 2016, oil on canvas, 30 x 20 in., Claggett/Rey Gallery, Vail, Colorado ■ (BOTTOM RIGHT) KEVIN BEILFUSS (b. 1963), *Angelica*, 2016, oil on panel, 18 x 24 in., Walls Gallery, White Sulphur Springs, West Virginia



(TOP LEFT) JOEL DANIEL PHILLIPS (b. 1989), *Leroy*, 2016, charcoal and graphite on paper, 42 x 94 in., collection of Vince Sadusky ■ (TOP RIGHT) KYLE STUCKEY (b. 1987), *New Day*, 2017, oil on linen, 12 x 10 in., private collection ■ (BOTTOM RIGHT) PAUL KEYSAR (b. 1977), *Alise with Her Head in the Clouds*, 2017, oil on canvas, 20 x 24 in., collection of the artist





(LEFT) **SUZIE BAKER** (b. 1970), *To Every Purpose*, 2017, oil on linen, 40 x 20 in., collection of the artist ■ (TOP RIGHT) **KWANI POVU WINDER** (b. 1989), *In His Eyes*, 2017, oil on linen, 20 x 16 in., private collection ■ (CENTER RIGHT) **LEE GUK HYUN** (b. 1983), *The Girl in the Dream*, 2015, oil on canvas, 24 x 18 in., Lotton Gallery, Chicago ■ (BOTTOM RIGHT) **HOLLIS DUNLAP** (b. 1977), *Susan 2*, 2016, oil on panel, 16x12in., Sirona Fine Art, Hallandale Beach, Florida





(THIS PAGE) **KATIE O'HAGAN** (b. 1971), *Believe*, 2016, oil on linen, 40 x 30 in., RJD Gallery, Bridgehampton, New York ■ (OPPOSITE PAGE, TOP LEFT) **JAMES TENNISON** (b. 1955), *Molly*, 2014, oil on canvas, 32 x 24 in., private collection, Atlanta ■ (OPPOSITE PAGE, TOP RIGHT) **TERESA ELLIOTT** (b. 1953), *Moon as Bright*, 2016, oil on panel, 16 x 12 in., private collection ■ (OPPOSITE PAGE, CENTER LEFT) **SCOTT W. PRIOR** (b. 1968), *Matt Hensley*, 2016–17, oil on canvas, 16 x 20 in., collection of the artist ■ (OPPOSITE PAGE, BOTTOM LEFT) **JASON DRAKE** (b. 1955), *Time to Dream*, 2017, oil on panel, 24 x 28 1/2 in., collection of the artist ■ (OPPOSITE PAGE, BOTTOM RIGHT) **KRISTY GORDON** (b. 1980), *Boundaries*, 2016, oil on canvas, 24 x 18 in., Cube Gallery, Ottawa

